

MiMo Directional Antenna

WS-WMM8G-7-38



WS-WMM8G-7-38

Supports MiMo & diversity across 3G,4G & 5G

Two wideband elements with gain

Durable wall mount housing

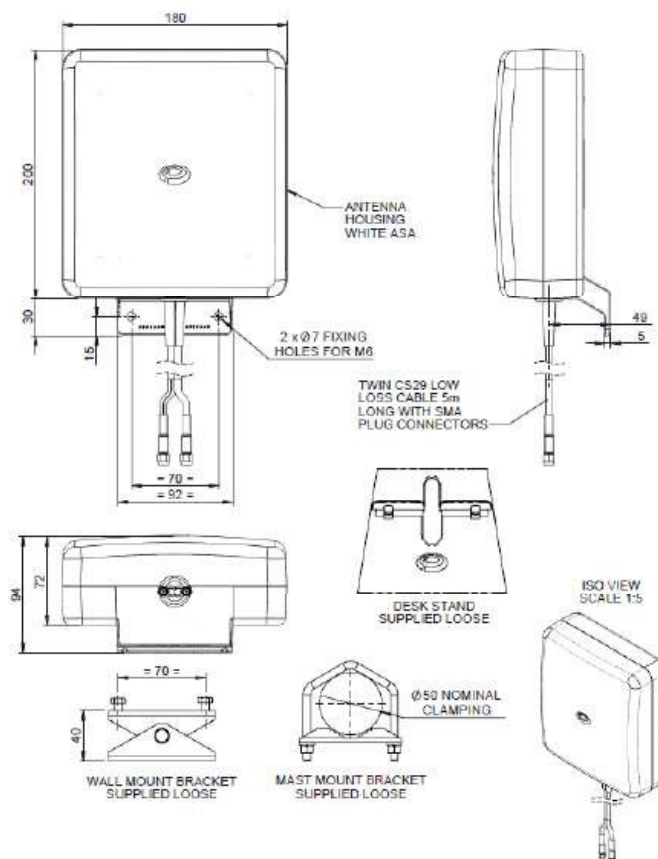
Suitable for mast, wall and desk mounting

The WS-WMM8G-7-38 antenna is a high directional gain 2x2 MiMo signal boosting antenna for 2G, 3G,4G and many 5G networks. Incorporating two separately fed wideband elements in a single housing, the WS-WMM8G-7-38 is equipped to provide client side MiMo and diversity support for 2G, 3G, 4G and many 5G networks. With 6dBi of peak gain at 698-960MHz and 9dBi peak gain at 1710-3800MHz the antenna provides extra gain for next generation networks.

The rugged, weather resistant housing is designed for wall mounting and wall and mast mount brackets are provided. Supplied with fitted low loss double shielded twin cable the WS-WMM8G-7-38 minimises exposed connector joints and simplifies cable management for easy installation.

The WS-WMM8G-7-38 is an cost effective value added product for network operators and service providers ensuring a stable link with improved data rates for subscribers thereby improving satisfaction and retention.

WS-WMM8G-7-38-5SP Shown



MiMo Directional Antenna

WS-WMM8G-7-38

Part Number

WMM8G-7-38-5SP

WMM8G-7-38-03NJ

Electrical Data

Frequency Range (MHz)	Antenna 1	698-960/1710-2700/3400-3800
	Antenna 2	698-960/1710-2700/3400-3800
Operational bands	2G / 3G / 4G / 5G	
Radiation Pattern	Directional	
Nominal Polarisation	+/- 45deg Vertical	
Peak Gain (excl cable loss)+	698-960 MHz	6dBi
	1710-2170 MHz	9dBi
	2396-2700 MHz	9dBi
	3400-3800MHz	9dBi
Efficiency - excluding cable loss (all bands)	> 60%	
Correlation co-efficient (all bands)	< 0.1	
Max input power (W)	20 Watts	
Nominal Impedance	50Ω	

Mechanical Data

Dimensions (mm)	Height	230 (9")
	Width	180 (7.1")
	Depth	94 (3.7")
Operating temp (°C)	-30° / +80°C (-40° / 176°F)	
Material	U.V. stable, impact resistant ASA	
Colour	RAL9010 (Pure White)	
Weight (g)	955	
Ingress Protection	IP 65	

Mounting Data

Fixing	Wall mount / mast mount / desk mount
Mounting bracket material	Stainless steel / Aluminium
Pole diameter (mm)	20-50 / (0.78 - 1.96")

Cable Data

Type	2 x CS29 Coax (double shielded RG58)	2 x CS29 Coax (double shielded RG58)
Diameter (mm)	5 (0.2")	5 (0.2")
Length (m)	5 (16')	0.3 (12")
Termination	2 x SMA (m)	2 x N(f)

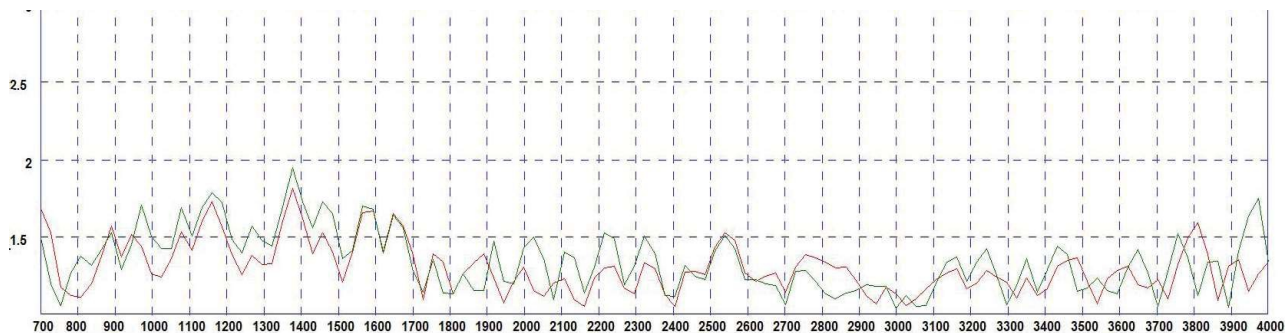
+ Swept peak gain simulated in CST Microwave studio for each element excluding cable loss

MiMo Directional Antenna

WS-WMM8G-7-38

VSWR

Typical VSWR Elements 1 & 2 *



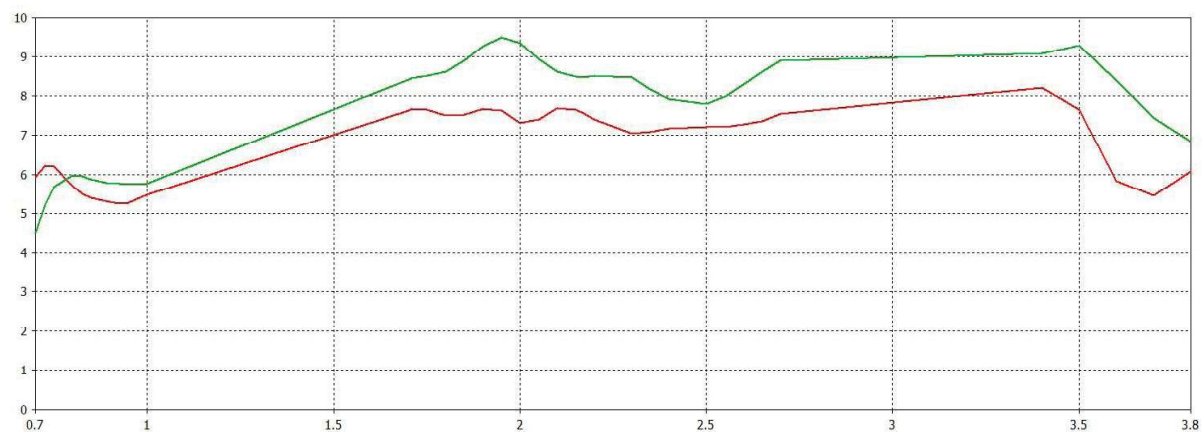
*VSWR measured with 0.5m (20") of CS29 cable.

Typical Isolation on Elements 1 & 2 *



*Red Trace = typical isolation with 5m (17') of CS29 cable

Swept Peak Gain Elements 1 & 2 *



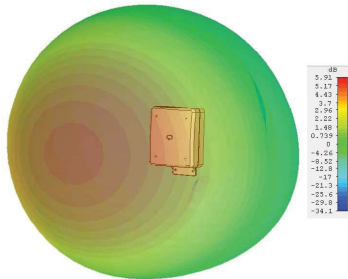
*Elements 1 & 2 swept peak gain without cable simulated in CST Microwave Studio

MIMO Directional Antenna

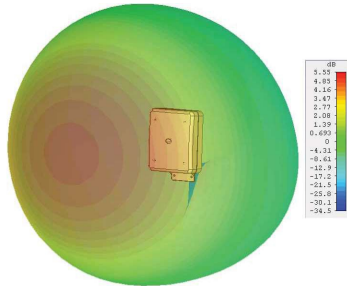
WMM8G-7-38-[VAR]

PANORAMA ANTENNAS

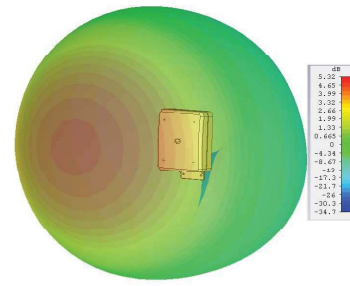
3D Gain Plot (750MHz)



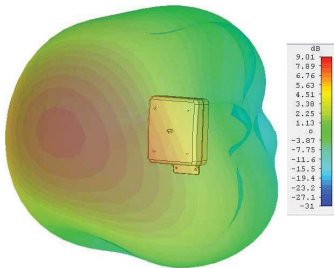
3D Gain Plot (850MHz)



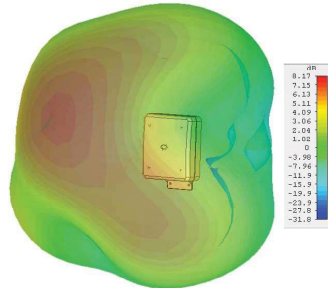
3D Gain Plot (950MHz)



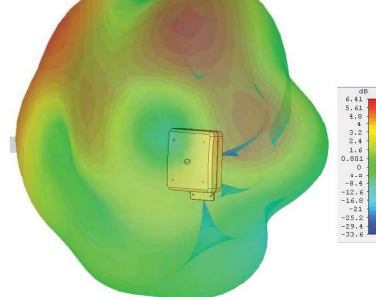
3D Gain Plot (1800MHz)



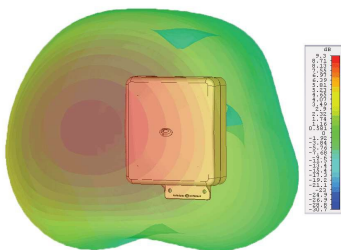
3D Gain Plot (2000 MHz)



3D Gain Plot (2600 MHz)



3D Gain Plot (3600MHz)



*WS-WMM8G-7-38 3D Patterns show realised gain both elements fed modelled in CST Microwave Studio without additional cable